

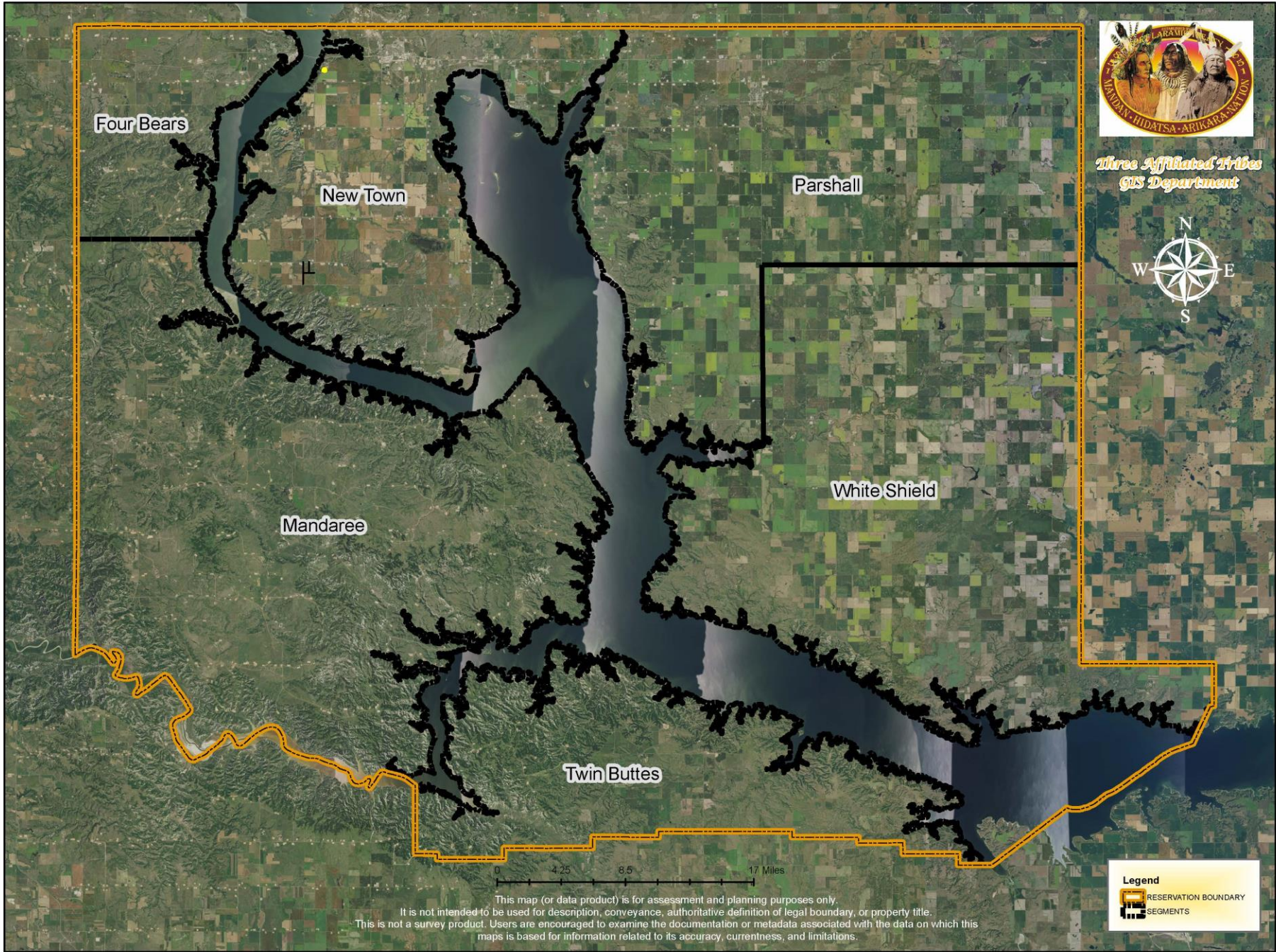
Transportation GIS Review

Tanya Sand-Driver

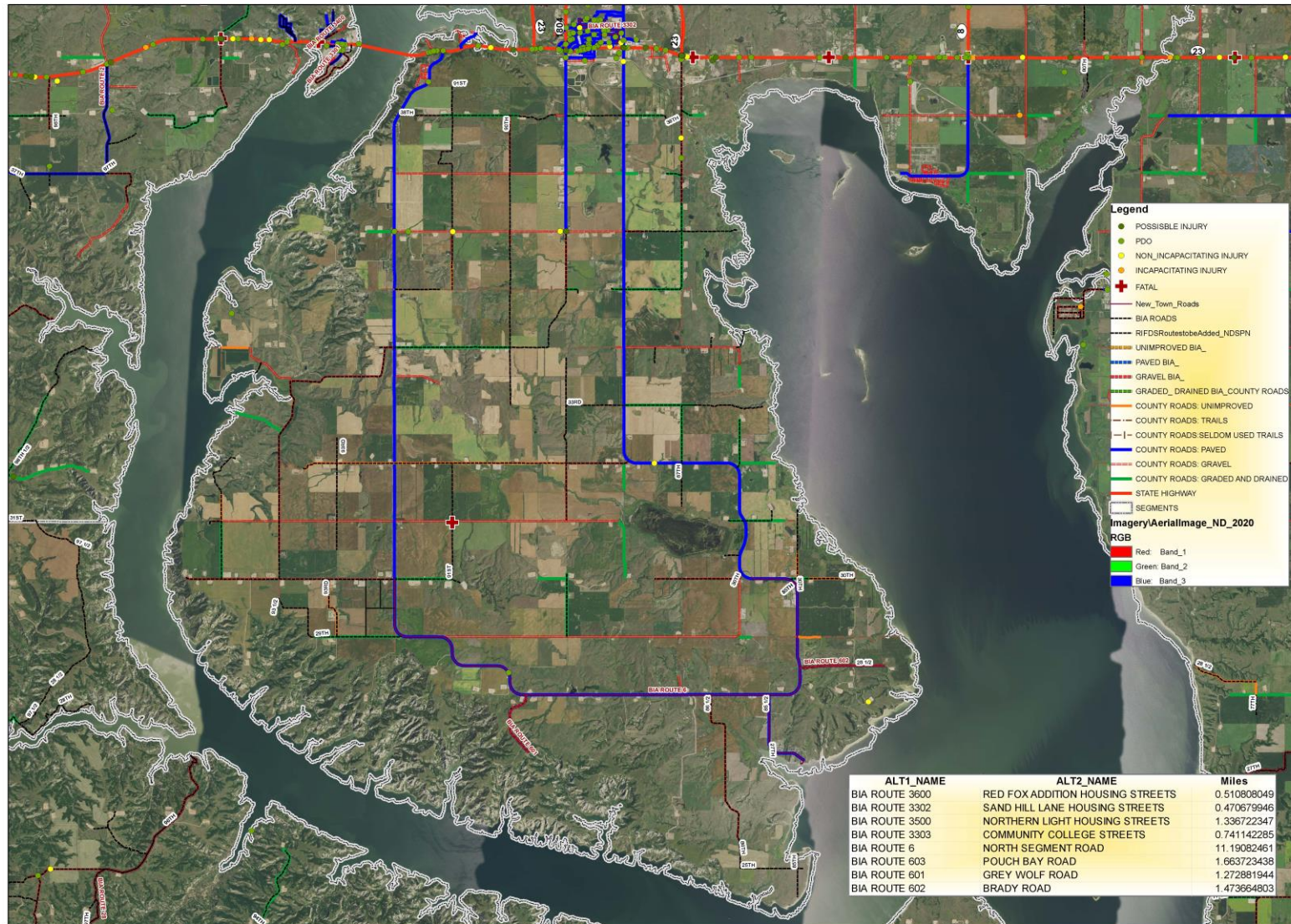
TAT GIS Director

Three Affiliated Tribes

- Fort Berthold Indian Reservation consists of 988,000 acres
- Divided by six segments: North, South, East, Northeast, West, and Four Bears Segment.
- Also divided by six counties: Dunn, Mercer, Mountrail, McKenzie, Mclean, and Ward.



North Segment-New Town



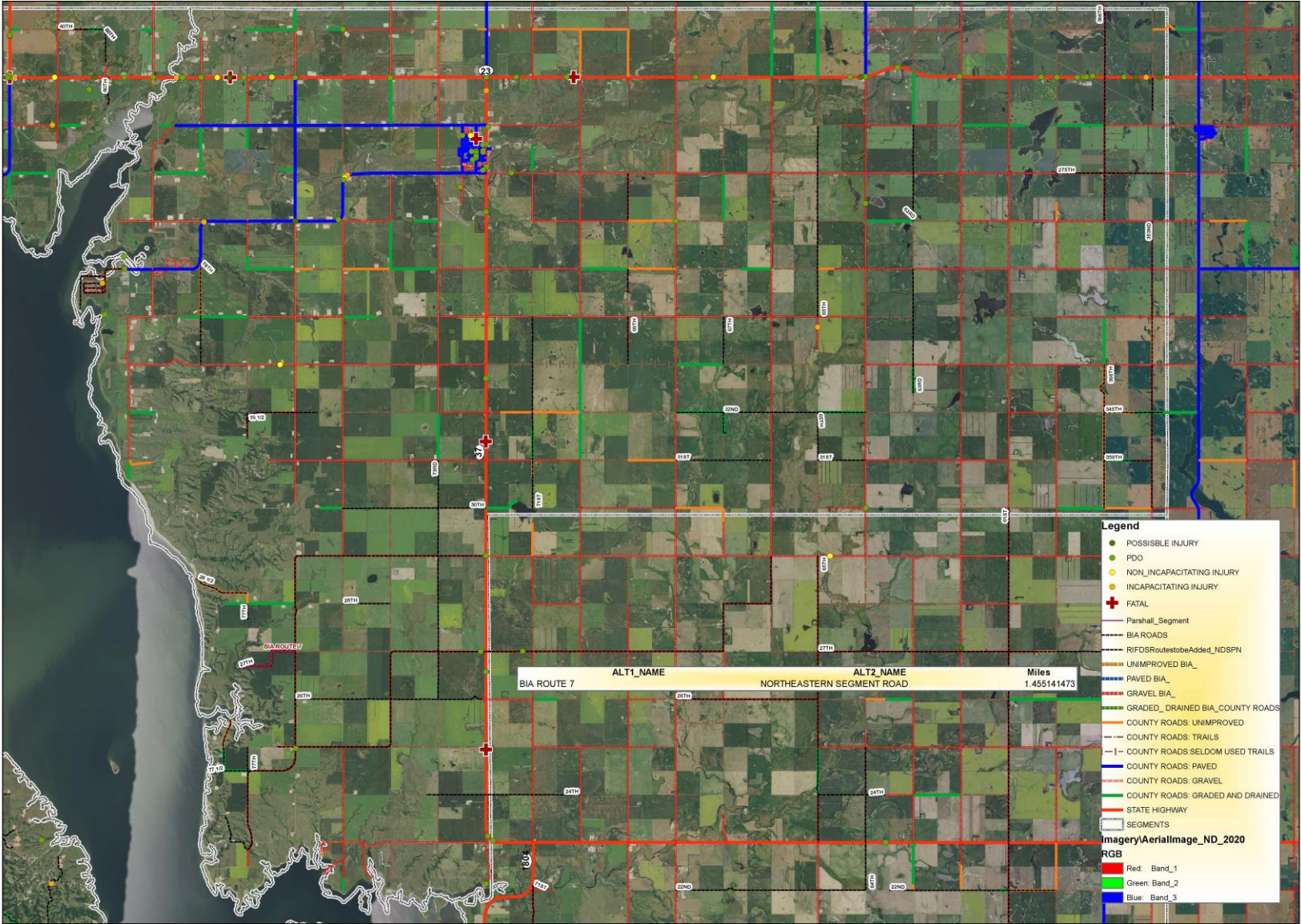
FORT BERTHOLD
INDIAN RESERVATION
NEW TOWN NORTH SEGMENT ROADS
CRASH DATA

0 1.75 3.5 7 Miles
1 in = 2 miles

This map (or data product) is for assessment and planning purposes only.
It is not intended to be used for description, conveyance, authoritative definition of legal boundary, or property title.
This is not a survey product. Users are encouraged to examine the documentation
or metadata associated with the data on which this map is based for information related to its accuracy, currentness, and limitations.



NorthEast Segment-Parshall



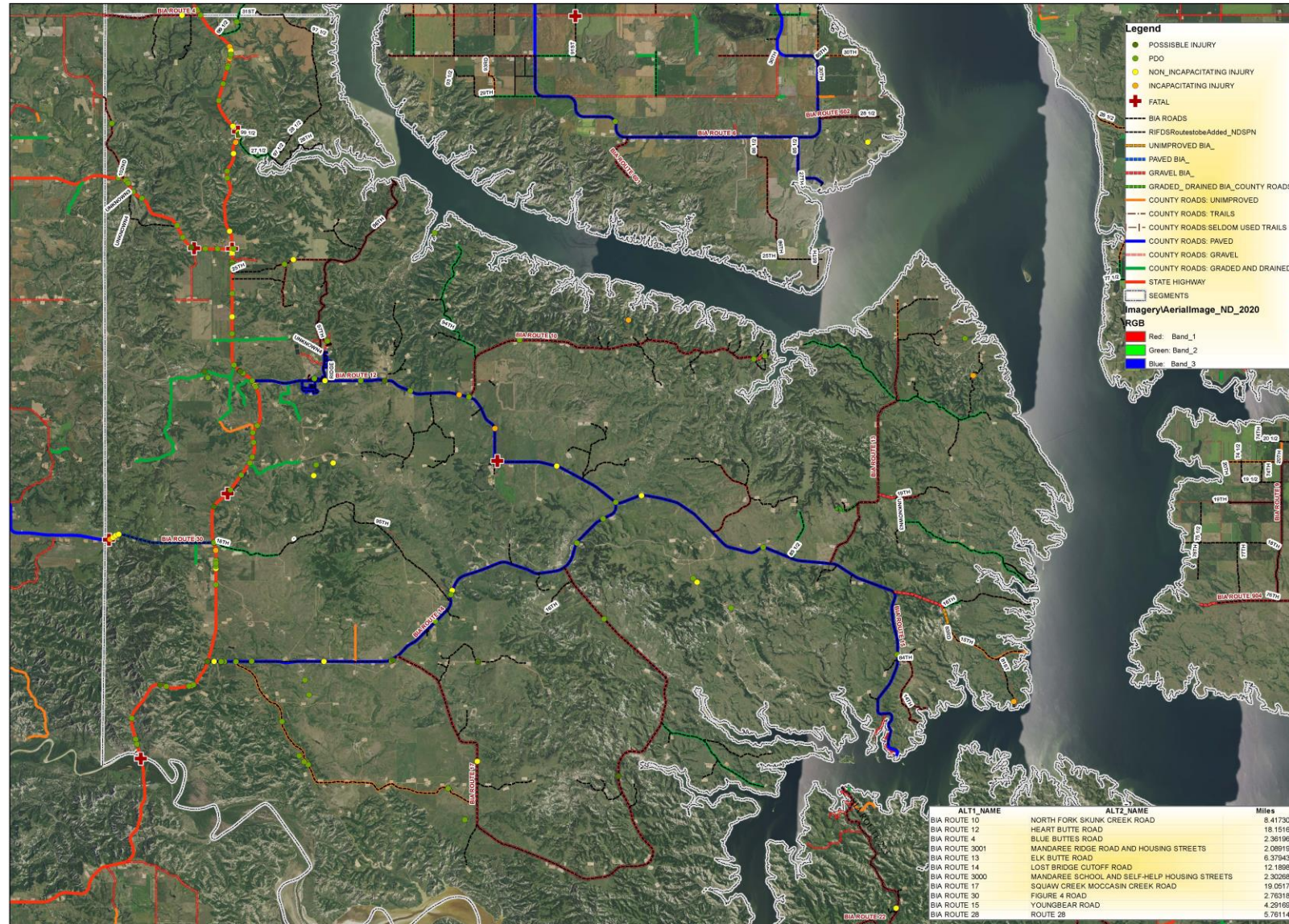
FORT BERTHOLD
INDIAN RESERVATION
PARSHALL NE SEGMENT ROADS
CRASH DATA

0 2.25 4.5 9 Miles
1 in = 2 miles

This map (or data product) is for assessment and planning purposes only.
It is not intended to be used for description, conveyance, authoritative definition of legal boundary, or property title.
This is not a survey product. Users are encouraged to examine the documentation
or metadata associated with the data on which this map is based for information related to its accuracy, currentness, and limitations.



West Segment-Mandaree



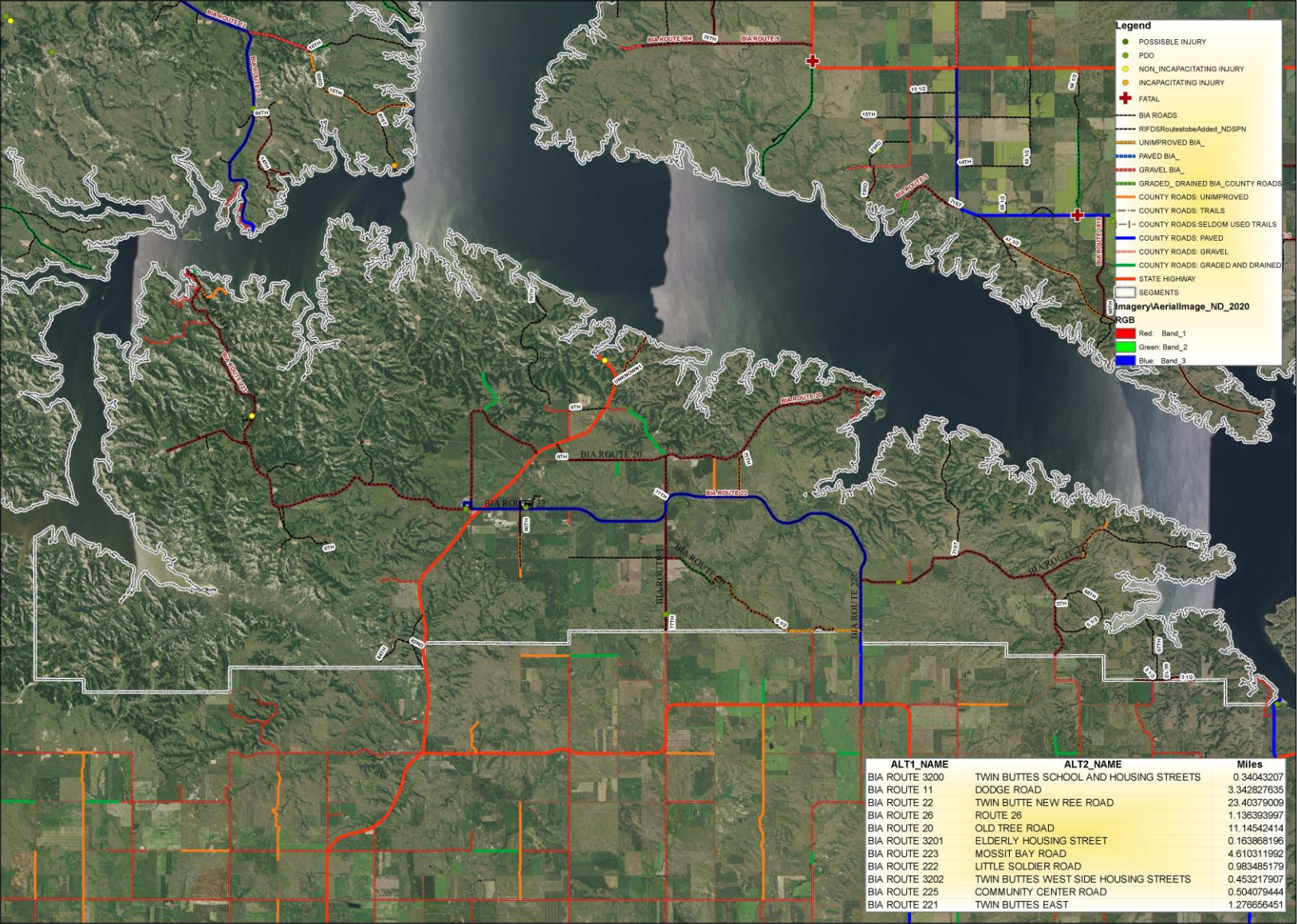
FORT BERTHOLD
INDIAN RESERVATION
WEST SEGMENT ROADS
CRASH DATA

0 2.5 5 10 Miles
1 in = 2 miles

This map (or data product) is for assessment and planning purposes only.
It is not intended to be used for description, conveyance, authoritative definition of legal boundary, or property title.
This is not a survey product. Users are encouraged to examine the documentation
or metadata associated with the data on which this map is based for information related to its accuracy, currentness, and limitations.



South Segment-Twin Buttes



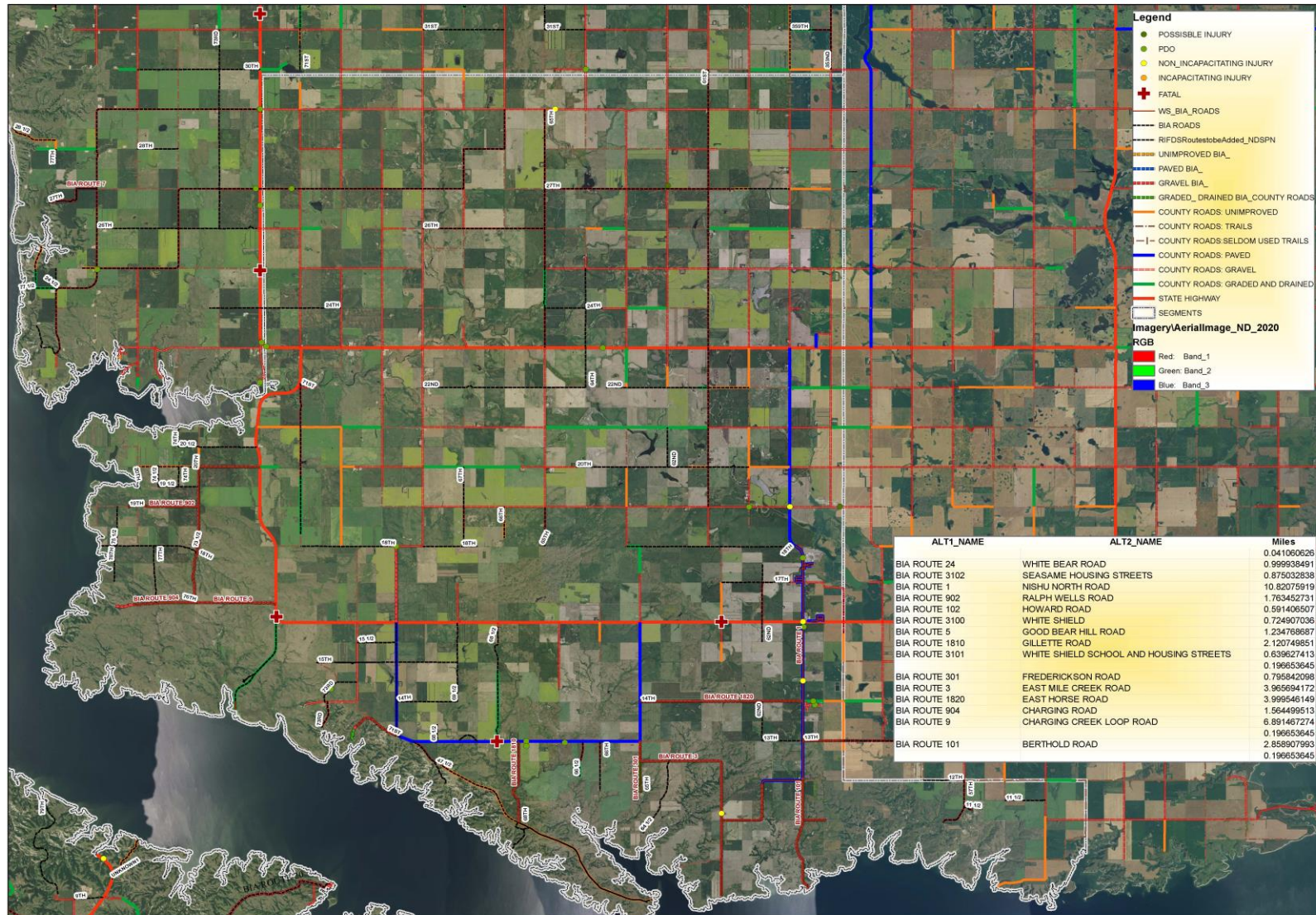
FORT BERTHOLD
INDIAN RESERVATION
SOUTH SEGMENT ROADS
CRASH DATA

0 2 4 8 Miles
1 in = 2 miles

This map (or data product) is for assessment and planning purposes only.
It is not intended to be used for description, conveyance, authoritative definition of legal boundary, or property title.
This is not a survey product. Users are encouraged to examine the documentation
or metadata associated with the data on which this map is based for information related to its accuracy, currentness, and limitations.



East Segment-White Shield

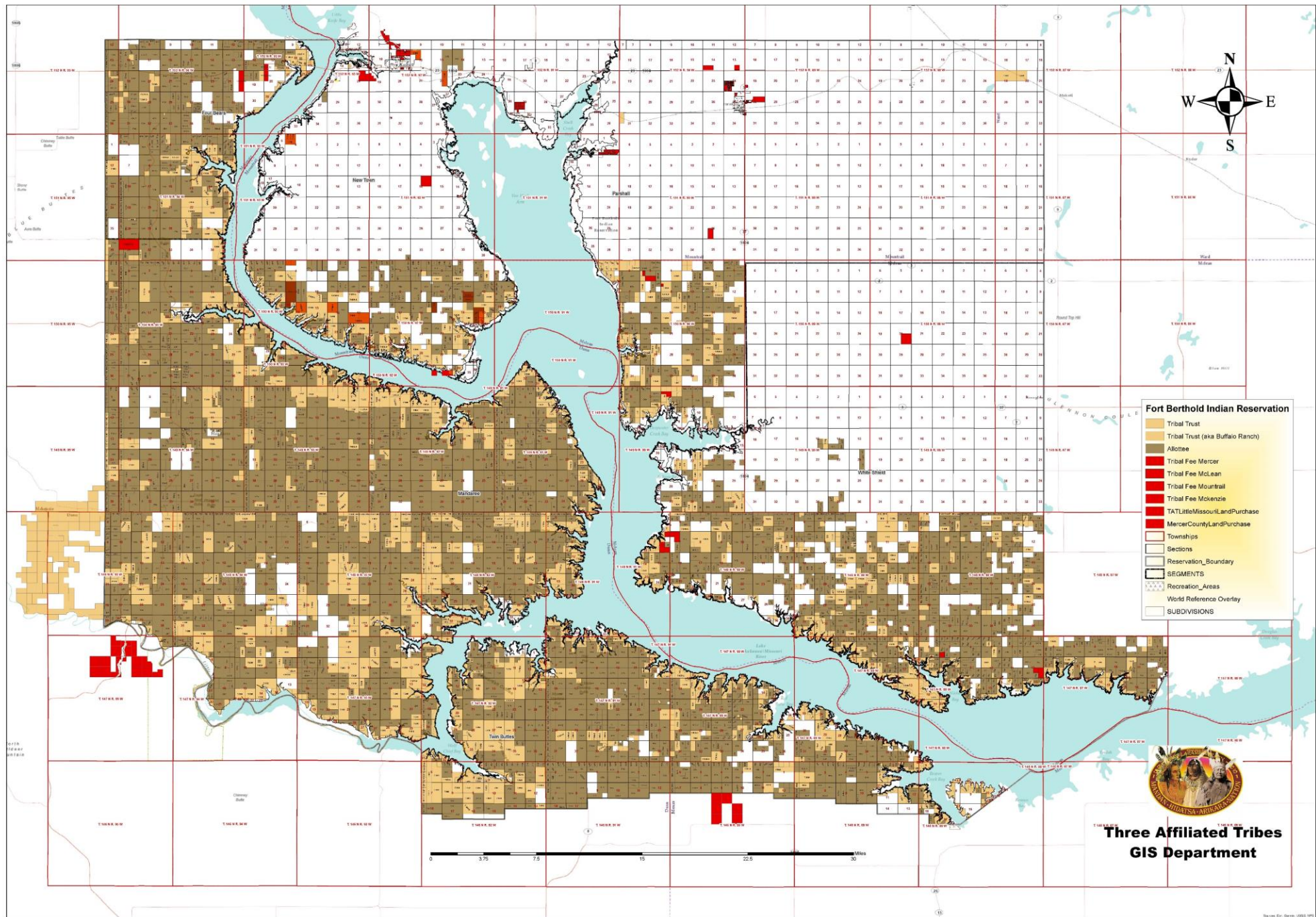


FORT BERTHOLD
INDIAN RESERVATION
EAST SEGMENT ROADS
CRASH DATA

0 2.5 5 10 Miles
1 in = 2 miles

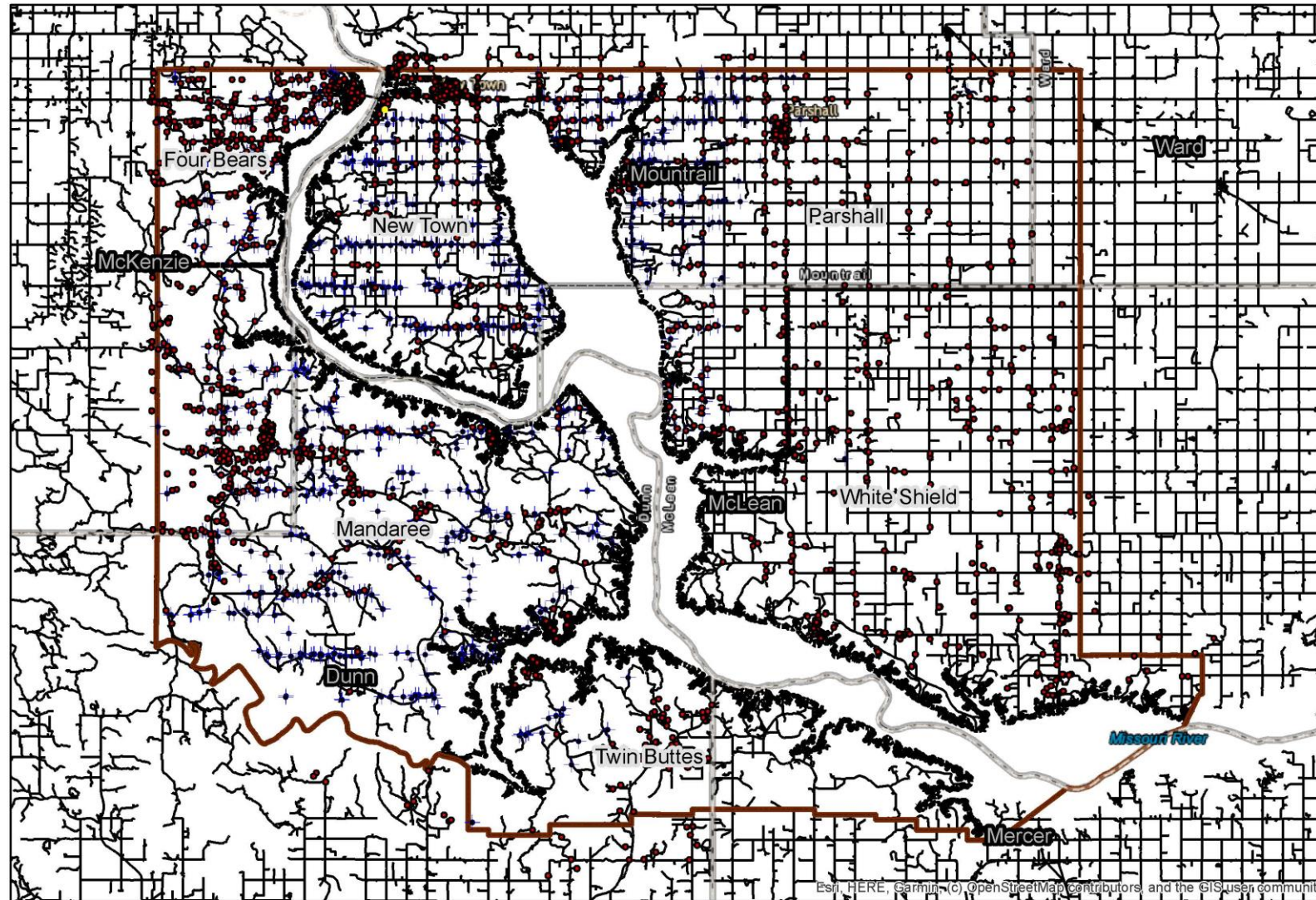
This map (or data product) is for assessment and planning purposes only.
It is not intended to be used for description, conveyance, authoritative definition of legal boundary, or property title.
This is not a survey product. Users are encouraged to examine the documentation
or metadata associated with the data on which this map is based for information related to its accuracy, currentness, and limitations.





**Three Affiliated Tribes
GIS Department**

Roads, 911 Points, Active Oil Wells



911 Points and Roads

0 10 20 40 Kilometers

This map application was prepared with geographic information system (GIS) data created by the Three Affiliated Tribes GIS, or other contributing agencies. These entities do not warrant or guarantee the accuracy or suitability of GIS data for any purpose. The GIS data within this application is intended to be used as a general index to spatial information and not intended for detailed, site-specific analysis or resolution of legal matters.



Demographic Segment Maps

- Available on the MHA Nation Website Department Directory under the GIS (Geographical Information Systems).
- <https://www.mhanation.com/geographic-information-systems>

GIS -Transportation Responsibility

- Upkeep of an accurate inventory of roads for the Three Affiliated Tribes.
- Cross referencing shapefiles and data from BIA, six counties, NDDOT, TIGER census for data accuracy
 - FBIR Road Lengths differ from other entities
- Road surface and type
 - Gravel, Paved, Trail, etc.
 - Maintained by:Tribe or County

Researching Right of Way

Requesting Title Status Report from BIA

Road Drawings

Georeferencing

Twin Buttes
Mandaree
Four Bears
New Town
Parshall
White Shield
Totals

Local Access		BIA		State		County		Municipal/ Tribal	
# of Routes	Mileage	# of Routes	Mileage	# of Routes	Mileage	# of Routes	Mileage	# of Routes	Mileage
16	9.8	52	50.1	1	8.1	42	33.1		
81	85.1	57	76.8	2	24.7	56	75.5		
32	22.7	11	11.4	2	18.2	26	24.7		
10	2.8	14	13.7	6	15.5	163	162.7	81	8.7
3	4.3	1	1.4	1	30.6	254	410.9	42	10
4	1.2	47	54.2	1	41.5	220	313.5		
146	125.9	182	207.6	13	138.6	761	1020.4	123	18.7

Miles 1511.2
Routes 1225

Grade and Drain
Gravel
Paved
Trail
Unimproved

White Shield		Parshall		New Town		Four Bears		Mandaree		Twin Buttes	
# of Routes	Mileage										
22	25.1	42	34.8	13	6.3	3	3.4	9	12	3	2.2
92	182.1	110	234.6	71	68.3	16	14.9	44	72.1	48	43.2
24	47.4	31	44.5	107	48.3	9	6.7	28	20.9	17	11.2
102	103.1	77	97.1	47	47.5	10	12.1	29	44.9	24	25.2
25	27.7	32	25.1	16	14.6	1	0.5	4	3.4	3	2.8
265	385.4	292	436.1	254	185	39	37.6	114	153.3	95	84.6

Miles 1282 mileage discrepancy is due inconsistent data
Routes 1059

- Road system and network is the foundation to many other GIS responsibilities to the Three Affiliated Tribes.
- Emergency Management
 - Ambulance, Law Enforcement, Fire;
- 911 Systems-Next Gen 911
 - 3 to 4 names for a road;
 - Emergency care delayed due to the question of fastest route
 - Counties use Burkle Addressing System; each county has a different Schema
- Homesites
 - Roads need to be named for an accurate 911 and delivery addressing with the county it is located in.
- Snow Routes
 - Maintenance of gravel and snow removal; enrolled members on a county maintained road.
- Elder Routes
- Bus Routes
- Access Roads to Well Sites
 - These roads not inventoried, Private Roads, ROW

Database Management

- RIFDs System
- GRIT System
- TAT Standalone

Ongoing Tasks

- Purchasing and upgrading Equipment for accuracy of field data
- Collaborating with TSRC (Tribal Safety Regulatory Commission)
- Collaborating with State Entities: NDDOT, 911
- Collaborating with County Offices for Roads, 911, Homesite, Land Ownership
- Drone Technology
- Quick Road survey, precise mapping, land surveys, inspections of bridges and road construction
- Training of staff working along with local engineers Brosz